

MAYDAY

W E K E D

 **THE SPIRITUALIST**
BAR AND RESTAURANT

ONE BRUNCH DISH & 3 DRINKS (INCLUDING ARRIVAL DRINK) - £40PP

COCKTAILS

Arrive in style with a 'Team Emily' (*Elderflower Bellini*) or 'Team Andrea' (*Wild Strawberry Bellini*) and choice of two of the cocktails below. We trust you'll choose wisely.



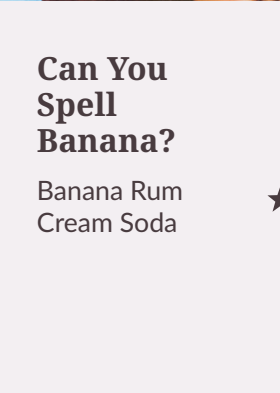
The Miranda

Chilli El Jimador,
Cointreau,
Mango,
Lime,
Honey,
Tajin



Florals for Spring?

Whitley Neill
Distillers Cut,
St. Germain,
Suze,
Elderflower tonic



Can You Spell Banana?

Banana Rum
Cream Soda



Gird Your Loins

Cariel Vanilla Vodka,
Passoa,
Passionfruit,
Viognier,
Pineapple,
Anise



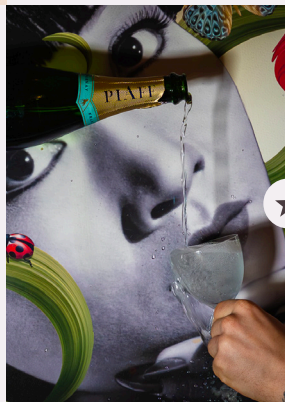
That's All!

Absolut Vanilia,
Rhubarb, Cocchi,
Acid blend,
Piaff champagne



Where's my Coffee? Did she die or something?

Absolut Vanilia,
Kahlua,
Cold Brew,
Sugar



BRUNCH

Choose one of the following dishes... Carefully.

Indulge - But make it deliberate!

Brunch in the Office

Steak, hummus, poached eggs, chimichurri (NGC)

Magnolia Bakery

Salt & chilli chicken, watermelon, furikake, spiked maple

Eight Dollars of Jarlsberg

Mushroom & miso benedict, spiked hollandaise (V)

The Paris Diet

Ciabatta, smash avo, whipped feta, pomegranate dressing (VG*, NGC*)

Add POACHED EGG - £2

Add BACON or HALLOUMI - £3.50

It's A Tough Call...

Classic French Toast, soaked in crème anglaise and served with maple syrup & berries

...They're so Different

Bacon French Toast, soaked in crème anglaise and served with streaky bacon, blueberries & maple syrup

- (V) Vegetarian
- (VG) Vegan
- (NGC) Non Gluten Containing
- (*) Dish can be modified to suit respective diet

Full dietary information can be found on back cover.



ARE YOU
RUNWAY-READY?

A Devil Wears Prada Personality Quiz



Think you could survive a day at RUNWAY?

Answer honestly. Miranda is... watching.

Circle A-D and turn over for results when done.

1. Your boss emails you at 2:47am. You:

- A Reply instantly - obviously
- B Screenshot it and complain, then reply
- C Ignore it (boundaries matter)
- D Already anticipated the request and handled it

2. Your outfit today is:

- A Effortlessly iconic
- B Trendy but slightly chaotic
- C Comfortable (and proud)
- D Carefully curated perfection

3. Someone says 'Florals for Spring'...

- A Groundbreaking.
- B I mean... they're not wrong
- C I love florals
- D Slow, unimpressed stare

4. Your approach to brunch is:

- A Strategic (maximise drinks value)
- B Chaotic (order everything)
- C Chill vibes only
- D Impeccably planned

5. Your coworker is spiralling. Would you?:

- A Fix it. Quietly.
- B Gossip about it later
- C Comfort them
- D Wonder why they're still employed

6. Pick a drink:

- A The Miranda
- B Florals for Spring?
- C Gird Your Loins
- D A Light Drizzle

YOUR RUNWAY ROLE...

Discover which *Devil Wears Prada* character you are





Mostly A

Miranda Priestly

Cold. Brilliant. Untouchable.

You don't do brunch, brunch happens around you.

Drink match: *The Miranda* (obviously)



Mostly B

Emily Charlton

Loyal, chaotic, and slightly unhinged under pressure.

You'd absolutely fight someone for fashion week.

Drink match: *Florals For Spring?*



Mostly C

Andy Sachs (before Paris)

Relatable. Grounded. Probably overdressed for this brunch.

You're just here for a good time (and maybe French toast).

Drink match: *Where's My Coffee?*



Mostly D

Nigel

The real backbone of everything. Stylish, observant, underappreciated.

You know what's chic before anyone else does.

Drink match: *That's All!*

THE **SPIRITUALIST**
BAR AND RESTAURANT

If you suffer from a food allergy or intolerance, please let your server know upon placing your order. Although every effort is made to provide allergen free meals, we use products that contain allergens in our kitchen and cannot rule out contamination due to shared equipment work surfaces and airborne particles.

A 10% service charge will automatically be applied to your bill. If you would prefer not to pay it, please let your server know and it will be removed.

